

THE CITY CONNECTION

"FACETS OF BLACK DIAMOND"

A BI-MONTHLY NEWSLETTER



Randall Arendt Visits Black Diamond

Randall Arendt is a landscape planner, site designer, author, lecturer, and an advocate of "conservation planning". He received his B.A. degree from Wesleyan University (*magna cum laude* and Phi Beta Kappa) and his M. Phil. degree in Urban Design and Regional Planning from the University of Edinburgh, Scotland, where he was a St. Andrew's Scholar. He is Senior Conservation Advisor at the Natural Lands Trust in Media, Pennsylvania.



Mayor Olness with Randall Arendt-Author of Rural by Design.

Mr. Arendt is the author of more than 20 publications. After co-authoring the award-winning *Dealing with Change in the Connecticut River Valley: A Design Manual for Conservation and Development*, he produced a 450-page sequel entitled *Rural by Design: Maintaining Small Town Character*, in 1994, which is listed among 39 volumes recommended by the American Planning Association for "the essential planning library". (It is also required reading for the AICP exam administered by the American Institute of Certified Planners.) His third major work *Conservation Design for Subdivisions: A Practical Guide to Creating Open Space Networks* (1996) was followed by a companion volume three years later, *Growing Greener: Putting Conservation into Local Plans and Ordinances*. Also in 1999 his fifth book appeared, *Crossroads, Hamlet, Village, Town: Design Characteristics of Traditional Neighborhoods, Old and New*. His latest book, *Envisioning Better Communities: Seeing More Options, Making Wiser Choices*, is being published by the APA and the Urban Land Institute, in March 2010.

(Source: *Greener Prospects*)

Elected Officials

- ◆ Mayor,
Rebecca Olness
- ◆ Councilmember,
Kristine Hanson
- ◆ Councilmember,
Craig Goodwin
- ◆ Councilmember,
Bill Boston
- ◆ Councilmember,
William Saas
- ◆ Councilmember,
Leih Mulvihill

VOLUME 3, ISSUE 2

In this issue:

What is I.D.D.E.?	2
Community Events	2
Maintenance of Smoke Alarms	2
Distracted Driving	3

MARCH/APRIL 2011

In this issue continued:

Lifeline Utility Rate Program	4-5
Property Taxes 2011	4-6
2011 Spring Recycling Event	5
Council/Committee Meetings / Contact Information	7

What is IDDE?

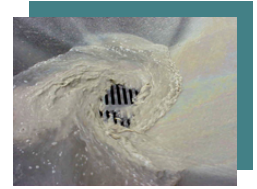
IDDE stands for Illicit Discharge Detection and Elimination. An illicit discharge is any discharge to the municipal separate storm sewer system that is not composed entirely of stormwater, except for discharges allowed under the City's stormwater permit.

Illicit discharges usually occur due to illegal connections to the storm sewer system. As a result of these illicit connections, contaminated water can enter storm drains or directly into our

local waterways without receiving proper treatment. Illicit connections may be intentional or unknown. Common causes of illicit discharges include floor drains connected to the storm sewer system, failing septic systems, illegal dumping practices, and the improper disposal of sewage from recreational practices such as boating or camping. Other causes of illicit discharges can come from simple sources such as cleaning pool filters, cleaning paint brushes, cars and other common activities.

It is the City's goal to help educate the citizens and business owners of Black Diamond about illicit discharges and how we can protect our waterways.

If you notice an illicit discharge, please call City Hall at (360) 886-2560, you can also download the [Illicit Discharge Form](#) from our website and fax or mail to City Hall.



Community Events

- **April 2** – Recycling Event—Located at the Police Dept. parking lot (25510 Lawson Street) **9 a.m. – 3 p.m.**
- **April 23** –Easter Breakfast – **8 a.m. – 11 a.m.**—\$5 Adults - \$4 Seniors and \$2.50 for Youth 13 and under
Contact the Black Diamond Community Center at 360-886-1011 for more information.

Smoke Alarm Maintenance

Daylight savings time begins March 13th this year. This is a great time to provide maintenance to your smoke alarms. Some of the maintenance that should be done includes:

- Change the battery
- Vacuum and/or dust around the sensor
- Check the manufacture date on the alarm

Smoke alarms should be replaced after 10 years of the date of manufacture. You can usually find the date on the back of the alarm once you remove it to change the battery. It is a good idea to replace the alarm every 10 years even if your alarm is hard wired into your home.



When purchasing a new smoke alarm, be sure to check what type you are buying. There are ionization smoke alarms and photo electric smoke alarms. They detect smoke differently and it is a good idea to have a mixture of the two types of smoke alarms or to buy a dual sensor (ionization & photo electric) smoke alarm. You can even buy smoke alarms with a 10 year lithium battery so you replace the smoke alarm when the battery dies.

Remember your smoke alarm works hard for you 24 hours a day 365 days a year. With a little TLC your alarms will continue to work every day to make your home safe for your family.

Information About Distracted Driving

According to negligentdriving.com, distracted driving has eclipsed drunk driving as the number one safety concern of driving public.

Distracted driving is any non-driving activity a person engages in that has the potential to distract him or her from the primary task of driving and increase the risk of crashing.

The three main types of distracted driving are:

- Visual – taking your eyes off the road
- Manual – taking your hands off the wheel
- Cognitive – taking your mind off what you're doing

While all distractions can endanger drivers' safety, texting is the most alarming because it involves all three types of distraction.

Other distracting activities include:

- Using a cell phone
- Eating and drinking
- Talking to passengers
- Grooming
- Reading (including maps)
- Using a PDA or navigation system
- Watching a video
- Changing the radio station, CD or MP3 player

Research on distracted driving reveals some

surprising facts:

- 20 percent of injury crashes in 2009 involved reports of distracted driving. (*NHTSA*)
- Of those killed in distracted-driving-related crashes, 995 involved reports of a cell phone as a distraction (18% of fatalities in distraction-related crashes). (*NHTSA*)
- In 2009, 5,474 people were killed in U.S. roadways and an estimated additional 448,000 were injured in motor vehicle crashes that were reported to have involved distracted driving. (*FARS and GES*)
- The age group with the greatest proportion of distracted drivers was the under-20 age group – 16 percent of all drivers younger than 20 involved in fatal crashes were reported to have been distracted while driving. (*NHTSA*)
- Drivers who use hand-held devices are four times as likely to get into crashes serious enough to injure themselves. (*Source: Insurance Institute for Highway Safety*)
- Using a cell phone use while driving, whether it's hand-held or hands-free, delays a driver's reactions as much as having a blood alcohol concentration at the legal limit of .08 percent. (*Source: University of Utah*)



DAYLIGHT SAVINGS

Daylight Savings is among us!
Don't forget to
SPRING FORWARD
1 Hour on March 13th!

Lifeline Utility Rate Discount Program



Black Diamond's Lifeline Utility Rate Relief Program is an annual discount program designed to help low-income seniors 62 years or older and low-income permanently disabled persons with their water, sewer and stormwater bills. Residents who are low-income on kidney dialysis at home can apply for a water rate discount as well.

The Lifeline Program provides discount relief of up to 50 percent from Black Diamond base utility rates as published in the City's fee schedule, and is reviewed annually.

Do I Qualify?

- Applicants must be the head of household and be responsible for the utility account at the qualifying residence, and
- Applicants must be receiving at least one city service of water, sewer and/or stormwater from the City of Black Diamond, and
- Applicant must be at least 62 years of age or older, or be permanently and totally disabled, or have a household member on kidney dialysis at home, and
- Total household income shall not exceed the limits as set by the latest Federal Department of Housing and Urban Development (HUD) guidelines.

Black Diamond's annual enrollment period is in May of each year with applications due to the City by May 31. In order to stay on the discount program, households will need to reapply each year.

What Determines Annual Gross Income?

Total gross income is the income of yourself, your spouse and that of any other tenants living in the home. Some

Continued to page 5

Property Taxes 2011



King County recently mailed 2011 appraised property values to all County property owners. Some property values have gone up, but many have gone down this year. The average for Black Diamond property, including commercial and personal property decreased 5% this year. As the appraised values in any given year go up or down,

property taxes tend to remain fairly constant, changing largely due to voter approved increases, usually for schools; or as in our case this year, the voter approved Public Safety Levy.

Washington State uses a budget-based property tax system in which taxing districts such as State and local schools, King County, the Port, cities and towns, libraries, fire and other special districts combine to form the total property tax bill. As noted on the King County Assessor's website, in a budget-based system each jurisdiction submits their annual adopted

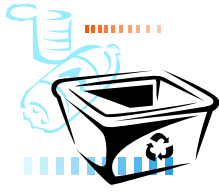
budgets to the assessor. The assessor then determines the taxing rate that is necessary to meet the adopted budgets. The rates are based on the value of residential, commercial, and personal property in each county.

After the property values are determined by the assessor, levy rates are created by dividing the assessed value by the combined approved budgets. King County collects the property taxes on behalf of the State, cities and taxing districts, and then distributes the revenue to the correct agencies. Under this model, residents only need to make property tax payments to a single location to support the services they receive at all levels of government.

In Washington cities, property tax increases are limited to a 1% annual increase per year unless voters approve a lid-lift or larger percent increases. The pie chart shows how Black Diamond's 2011 property taxes are distributed in 2011 by percentage. In total, 59.2% of all property taxes go to support State and

Continued to page 6

Spring Recycling Event Quickly Approaching



Spring may not be here yet, but our spring recycling event is quickly approaching.

This annual event allows residents of Black Diamond to recycle waste materials that they have accumulated over the long winter months with grant money provided by King County and the Department of Ecology. Items accepted include:

- ✦ Motor oil and filters
- ✦ Antifreeze
- ✦ Lead acid batteries
- ✦ Alkaline batteries
- ✦ Tires
- ✦ Bulky wood, and many other items.

Get a jump start on your spring

cleaning and join us for this annual event on April 2, 2011 from 9am to 3 pm at the Black Diamond Police Department at 25510 Lawson Street. Wood chipping services will be provided at this event. Only chipable material will be accepted. No grass, leaves, rotten or decayed material. No painted wood, plywood, or wood with nails accepted.

Please see the flier for this event at the City's website at

www.ci.blackdiamond.wa.us.

Teachings at Black Diamond Elementary

Aaron Nix, our Natural Resources/Parks Director will be teaching students all about the environment and helping them to learn about the watershed and unique characteristics of where we live. He will begin his first scheduled presentation on March 8 in Ms. Perkins second grade classroom at 1 p.m. Mr. Nix will be scheduling presentations with other classrooms throughout the upcoming months. For more information, please contact Aaron Nix, Natural Resources/Parks Director at (360) 886-2560 extension 220 or by email at anix@ci.blackdiamond.wa.us.

Lifeline Utility Rate (continued from page 4)

examples of annual gross income include:

Wages, salaries and tips; Interest and dividends; IRA withdrawals; Social Security benefits; Business income; Pension and annuity receipts and Governmental assistance.

How and When do I Apply?

Applications are due to City Hall by May 31st for utility discounts beginning with the June billing statement. Black Diamond residents who wish to apply for the Lifeline Utility Rate Relief Program will need to submit an application by that date. Applications are available at City Hall and on the city's website www.ci.blackdiamond.wa.us, or if you are already on the program, we will be mailing you a renewal application near the end of April.

Along with the completed application, additional documentation required includes a copy of the applicant's driver license or birth certificate for proof of age; a copy of the most recent tax return, social security annual statement, and/or annual retirement statement for proof of income; for disability, a copy of disability payments from SSI or SSDA or other disability payments and a signed and dated copy of a physician's disability statement. For low income seniors currently on the Lifeline Discount Program, the City requires new proof of income to be included in the annual application in order to continue on the program.

All documentation is subject to City of Black Diamond Finance Department verification. Please stop by City Hall, 24301 Roberts Drive, if you have questions about the Lifeline Utility Relief Program, or call (360) 886-2560 for more information.

Official HUD Guidelines as of May 2010

Size of Household	Maximum Annual Gross Income
1	\$45,100
2	\$51,550
3	\$58,000
4	\$64,400
5	\$69,600
6	\$74,750
7	\$79,900
8	\$85,050

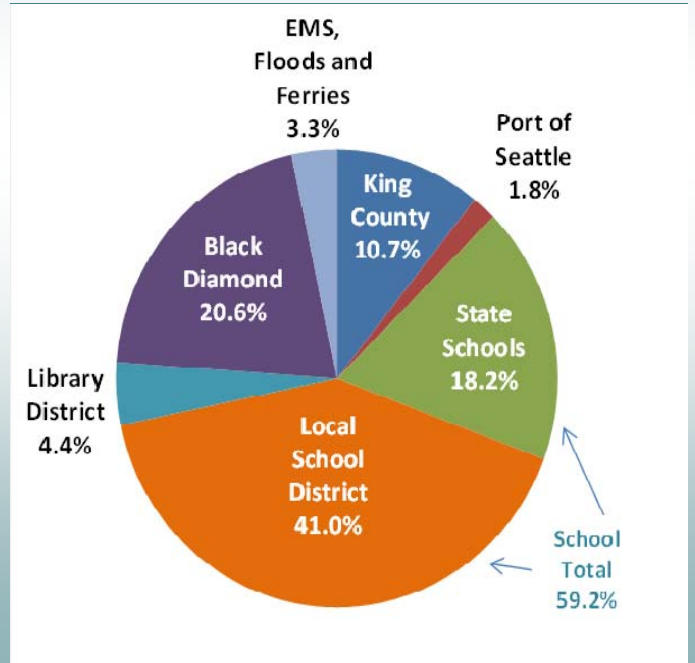
Property Taxes 2011 (continued from page 4)

local schools. Black Diamond's portion is 20.6% of the total, which support the City's Police and Fire Departments.

The Public Safety Levy in 2010 will impact homeowner taxes, but to a varying extent based on the change in appraised value along with other jurisdictional rate variables. But on average, we estimate Black Diamond's portion of property tax may equate to an average increase of between \$6 and \$7 per month for a typical homeowner in 2011.

2011 Black Diamond Property Tax Distribution :

Jurisdiction	2011 Levy Rate per \$1,000	Annual Prop Tax \$250,000 home	Monthly Prop Tax \$250,000 home
Port of Seattle	0.2237	\$ 55.92	\$ 4.66
State Schools	2.2799	\$ 569.98	\$ 47.50
FMS Levy	0.3000	\$ 75.00	\$ 6.25
Black Diamond	2.57	\$ 642.50	\$ 53.54
Floods and Ferriles	0.1134	\$ 28.34	\$ 2.36
School Dist (Enumclaw)	5.1255	\$ 1,281.37	\$ 106.78
Library District	0.5513	\$ 137.83	\$ 11.49
King County	1.3382	\$ 334.54	\$ 27.88
Total Property Tax Bill	12.50	\$ 3,125.46	\$ 260.46



COMMUNITY CONTACTS

Black Diamond Community Center
(360) 886-1011
 Hours of Operation:
 Monday – Friday 8 – 4:30

Black Diamond Museum Historical Society
(360) 886-2142
 Hours of Operation:
 Thursdays — 9 - 4
 Saturdays and Sundays — 12 - 3

Black Diamond Post Office
(360) 886-9429
 Hours of Operation:
 Monday — Friday 9 — 5

Black Diamond Library
(360) 886-1105
 Hours of Operation:
 Monday — Thursday 10 – 9
 Fridays — 10 – 6
 Saturdays — 10 – 5

DISTRIBUTION LISTS

Contact the City Clerks office to be added to the Council agenda distribution list, please call us at (360) 886- 2560 ext. 209 or contact the City Clerk by email at bmartinez@ci.blackdiamond.wa.us.

**CHECK OUT OUR WEBSITE AT
 WWW.CI.BLACKDIAMOND.WA.US**

COUNCIL/COMMISSION/COMMITTEE MEETINGS

CITY COUNCIL MEETINGS 25510 LAWSON STREET

- MAR 3 - 7 p.m.
- MAR 17 - 7 p.m.
- APR 7 - 7 p.m.
- APR 21 - 7 p.m.

COUNCIL WORKSTUDIES 25510 LAWSON STREET

•

PLANNING COMMISSION 25510 LAWSON STREET

- MAR 8 - 7 p.m.
- APR 12 - 7 p.m.

FINANCE/BUDGET COMMITTEE
24301 ROBERTS DRIVE
MAR 10 and MAR 24 - 9 a.m.
APR 14 and APR 28 - 9 a.m.

PARKS/CEMETERY COMMITTEE
24301 ROBERTS DRIVE
Mar 10—4 p.m.

PUBLIC WORKS COMMITTEE
24301 ROBERTS DRIVE
MAR 8 and MAR 22 - 4 p.m.
APR 12 and APR 26 - 4 p.m.

PUBLIC SAFETY COMMITTEE
24301 ROBERTS DRIVE
Mar 17—4 p.m.

**PLANNING/COMMUNITY
SERVICE COMMITTEE**
24301 ROBERTS DRIVE
Dates to be determined

ALL COUNCIL/COMMISSION MEETINGS ARE HELD IN THE COUNCIL CHAMBERS. ALL COMMITTEE MEETINGS ARE TENTATIVE AND HELD IN THE PUBLIC WORKS CONFERENCE ROOM UNLESS OTHERWISE NOTED ON THE AGENDA. CHECK WEBSITE FOR ANY CHANGES.

CONTACT INFORMATION

All City Offices Hours: Monday-Friday 8:30 a.m. — 5 p.m.

CITY HALL P.O. Box 599 / 24301 Roberts Drive	(360) 886-2560 (253) 631-0351 Fax: (360) 886-2592
COMMUNITY DEVELOPMENT/NATURAL RESOURCES/ ECONOMIC DEVELOPMENT P.O. Box 599 / 24301 Roberts Drive	(360) 886-2560 (253) 631-0351 Fax: (360) 886-2592
POLICE DEPARTMENT P.O. Box 309 / 25510 Lawson Street	(253) 631-1012 Fax: (360) 886-2901
MUNICIPAL COURT P.O. Box 599 / 25510 Lawson Street	(360) 886-7784 Fax: (360) 886-5354
FIRE DEPT. DISTRICT #44	(253) 735-0284
PUBLIC WORKS P.O. Box 599 / 24301 Roberts Drive	(360) 886-2560 (253) 631-0351 Fax: (360) 886-2592
UTILITY AFTER HOURS (EMERGENCY PAGER)	(253) 333-5555

Departments

- ◆ Asst. City Admin./City Clerk,
Brenda L. Martinez, CMC
- ◆ Community Development,
Steve Pilcher
- ◆ Economic Development,
Andrew Williamson
- ◆ Finance,
Mayene Miller
- ◆ Natural Resources/Parks,
Aaron Nix
- ◆ Police,
Jamey Kiblinger
- ◆ Public Works,
Seth Boettcher, PE

Monthly meetings for City Council are held the first and third Thursday of each month at 7 p.m. Planning Commission meetings are held on the first Tuesday after the first Council meeting at 7 p.m. of each month (unless otherwise noted). Please contact the Clerks office for more information or meeting materials at (360) 886-2560 or check out the City Clerks webpage at www.ci.blackdiamond.wa.us/Depts/Clerk.