

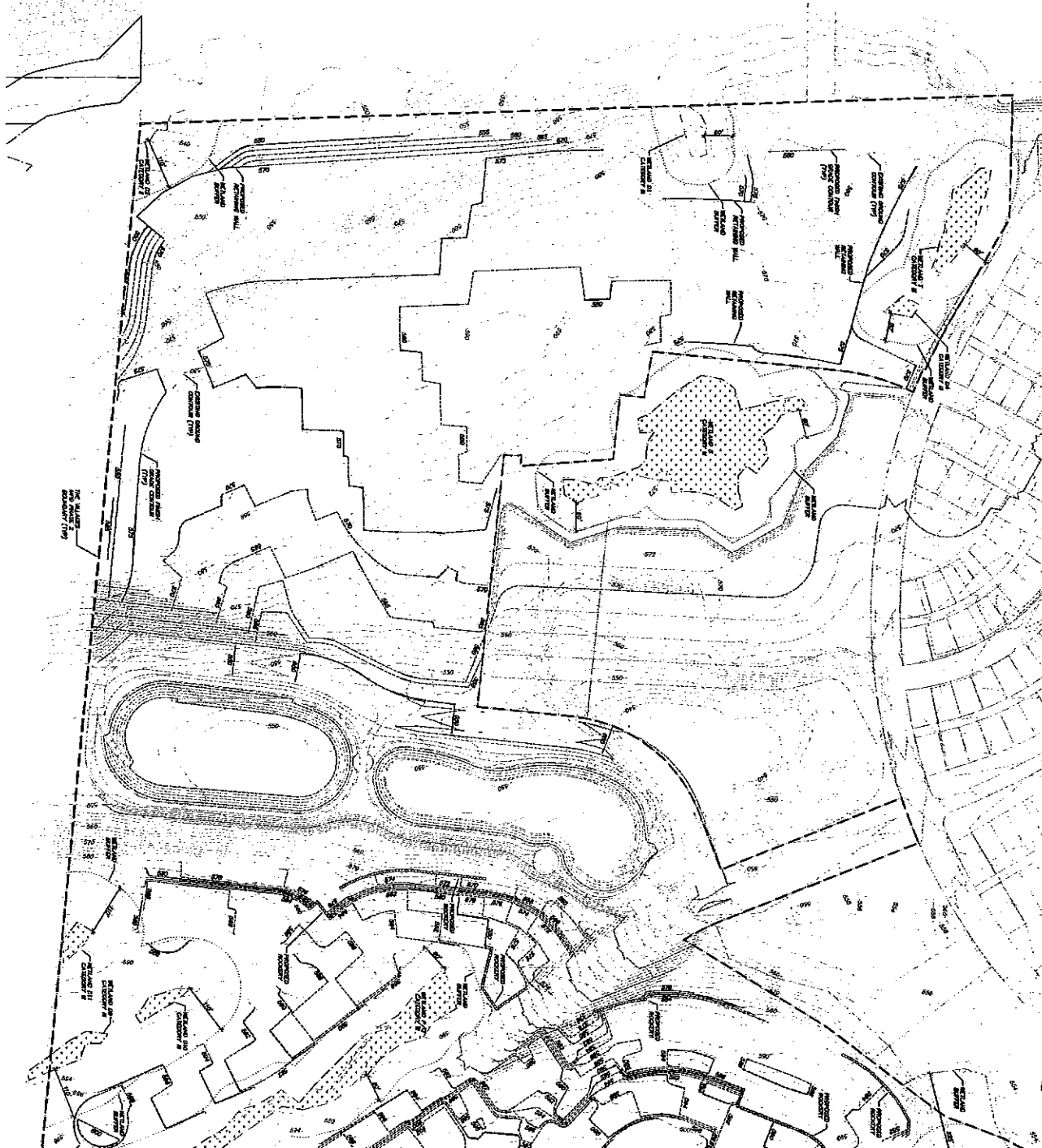
22a.

Overall Grading Plan (reduced plan set), Triad Associates

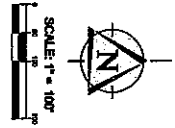
November 21, 2013







SEE SHEET C04



© 2005 TRIPAD ASSOCIATES

DATE: 05-31-2005  
 SHEET NO.: 05-336  
 SHEET TITLE: C02 of 8




NO.	DESCRIPTION	DATE
1	PRELIMINARY	05/31/05

**THE VILLAGES**  
 PHASE 2 PRELIMINARY GRADING PLAN

---

**THE VILLAGES/LAWSON HILLS MPDs**  
 PHASE 2 OVERALL GRADING PLAN

CITY OF BLACK DIAMOND, WASHINGTON



TRIPAD ASSOCIATES  
 10000 1st Avenue, Suite 100  
 Black Diamond, WA 98005  
 Phone: (206) 881-1111  
 Fax: (206) 881-1112  
 Website: www.tripad.com



THE VILLAGES/LAWSON HILLS MPDS  
 PHASE 2 PRELIMINARY GRADING PLAN

THE VILLAGES  
 PHASE 2 PRELIMINARY GRADING PLAN

PHASE 2 OVERALL GRADING PLAN

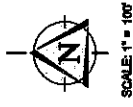
CITY OF BLACK DIAMOND,  
 WASHINGTON



STREET LIGHT  
 CROWN LIGHT FIXTURES

DATE: 05-336

PROJECT NO. C0348

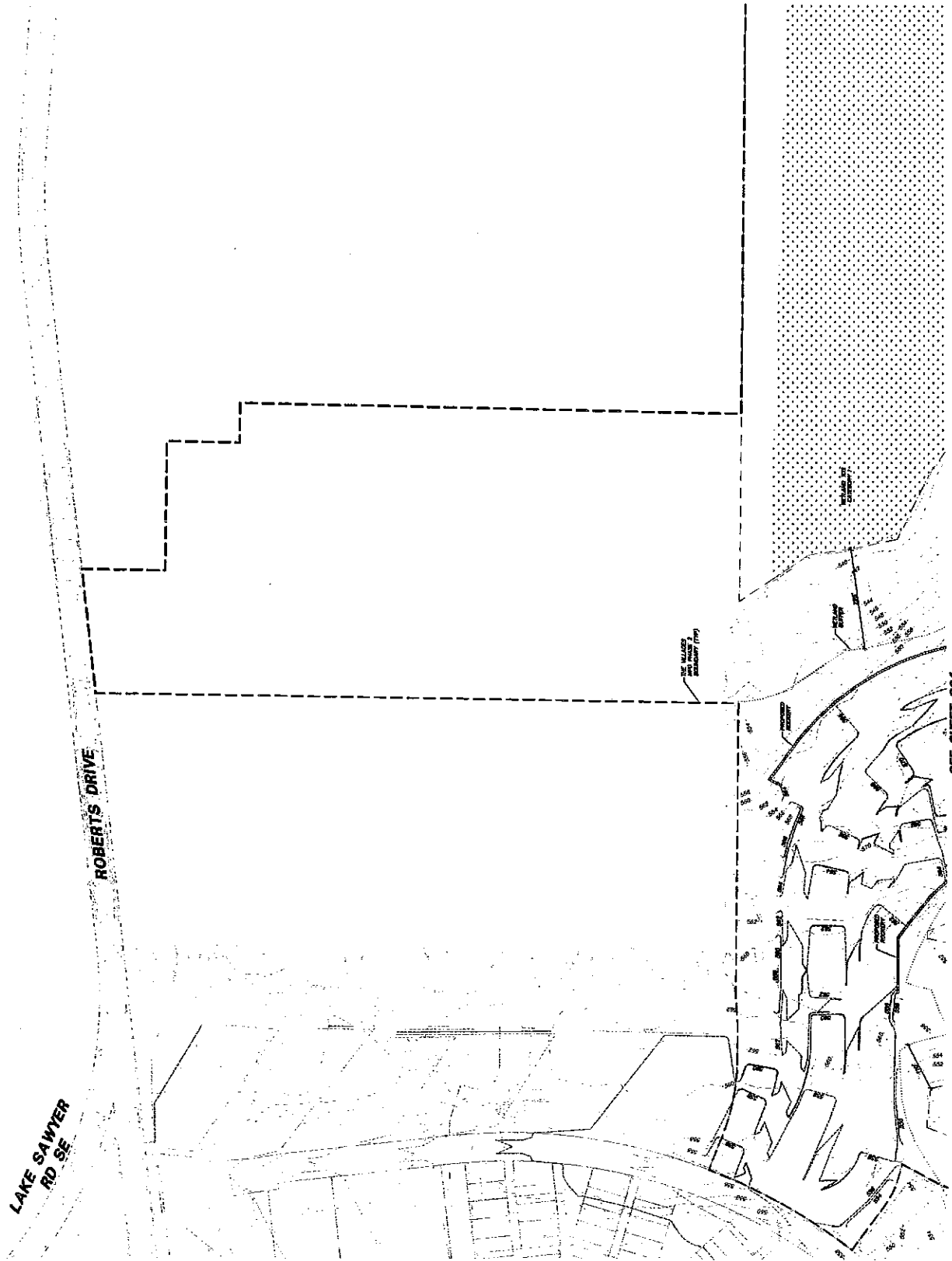


LAKE SAWYER  
 RD SE

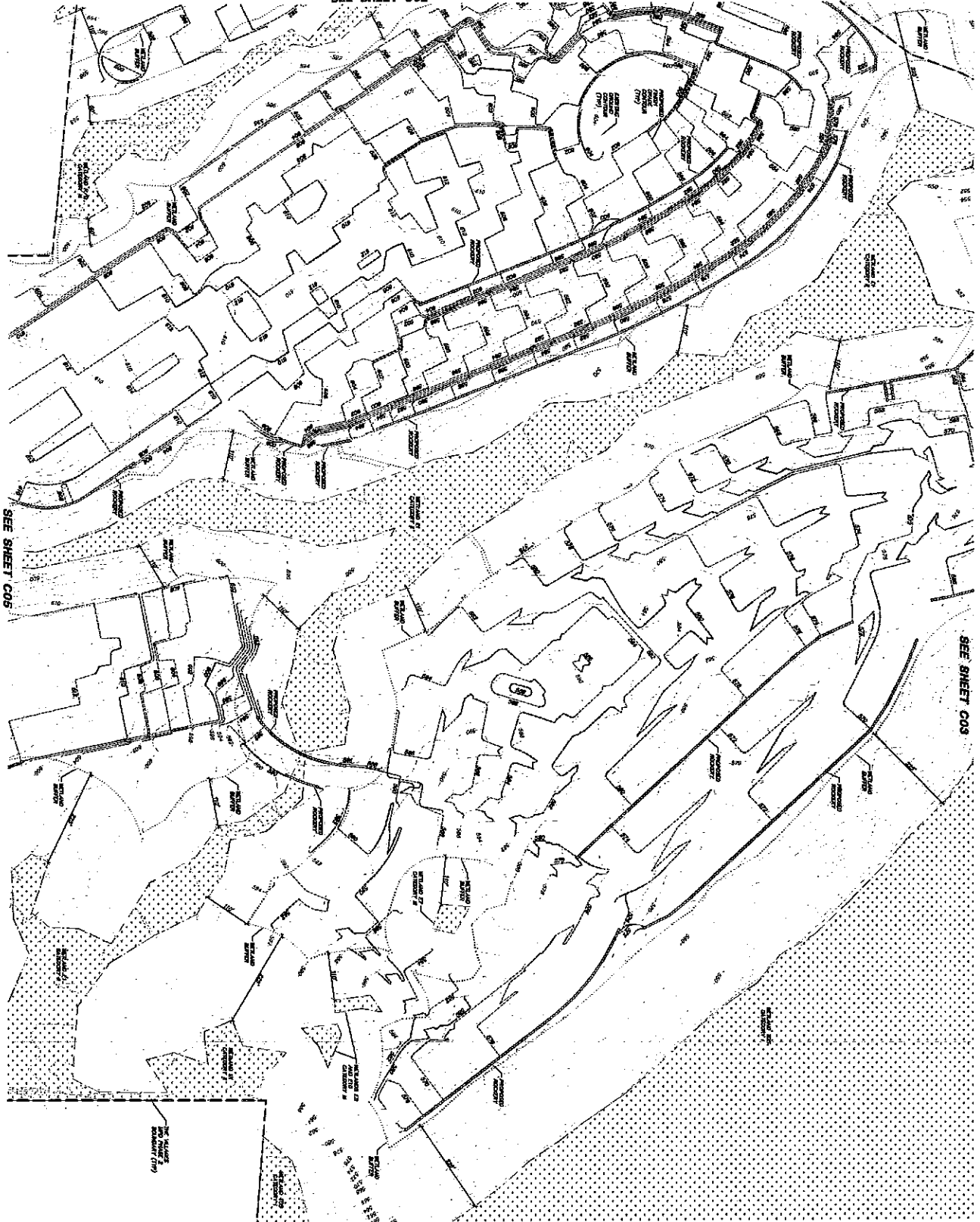
ROBERTS DRIVE

THE VILLAGES  
 PRELIMINARY PLAN

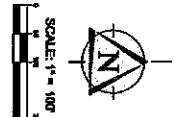
SEE SHEET C04



SEE SHEET C02



DATE: 10/15/2010



DATE: 10/15/2010	PROJECT NO: 05-336	PROJECT NAME: THE VILLAGES/LAWSON HILLS MPDs
DRAWN BY: [Name]	CHECKED BY: [Name]	APPROVED BY: [Name]
DATE: 10/15/2010	PROJECT NO: C04-8	PROJECT NAME: THE VILLAGES/LAWSON HILLS MPDs
DRAWN BY: [Name]	CHECKED BY: [Name]	APPROVED BY: [Name]



**THE VILLAGES**  
**PHASE 2 PRELIMINARY GRADING PLAN**

---

**THE VILLAGES/LAWSON HILLS MPDs**  
**PHASE 2 OVERALL GRADING PLAN**

CITY OF BLACK DIAMOND, WASHINGTON

**TRIAD**  
 CONSULTANTS  
 10000 1st Avenue, N.E.  
 Bellevue, WA 98004  
 Phone: (206) 835-8800  
 Fax: (206) 835-8801  
 www.triadconsultants.com



CITY OF BLACK DIAMOND, WASHINGTON

**THE VILLAGES/LAWSON HILLS MPDs**  
PHASE 2 OVERALL GRADING PLAN

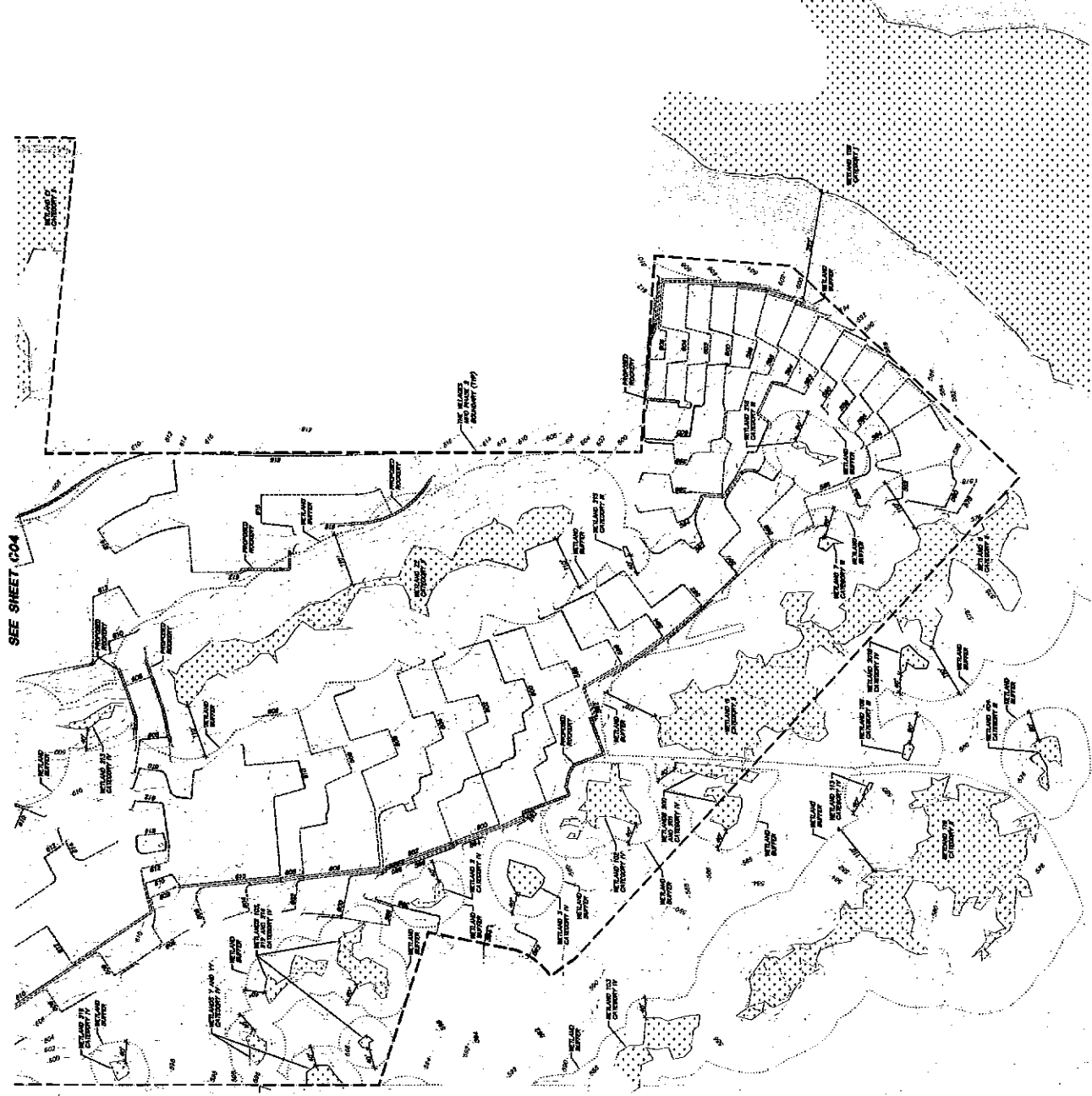
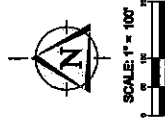
**THE VILLAGES**  
PHASE 2 PRELIMINARY GRADING PLAN

DATE	NOV 10 2011
PROJECT NO.	05-336
PROJECT NAME	THE VILLAGES/LAWSON HILLS MPDs
PROJECT LOCATION	13000 100TH AVE S, BLACK DIAMOND, WA 98006
PROJECT OWNER	CITY OF BLACK DIAMOND
PROJECT ENGINEER	TRIAD ASSOCIATES
PROJECT NO.	05-336
PROJECT NAME	THE VILLAGES/LAWSON HILLS MPDs
PROJECT LOCATION	13000 100TH AVE S, BLACK DIAMOND, WA 98006
PROJECT OWNER	CITY OF BLACK DIAMOND
PROJECT ENGINEER	TRIAD ASSOCIATES

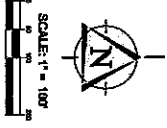
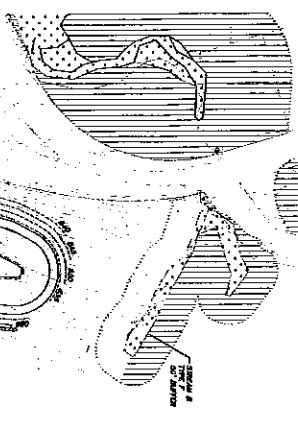
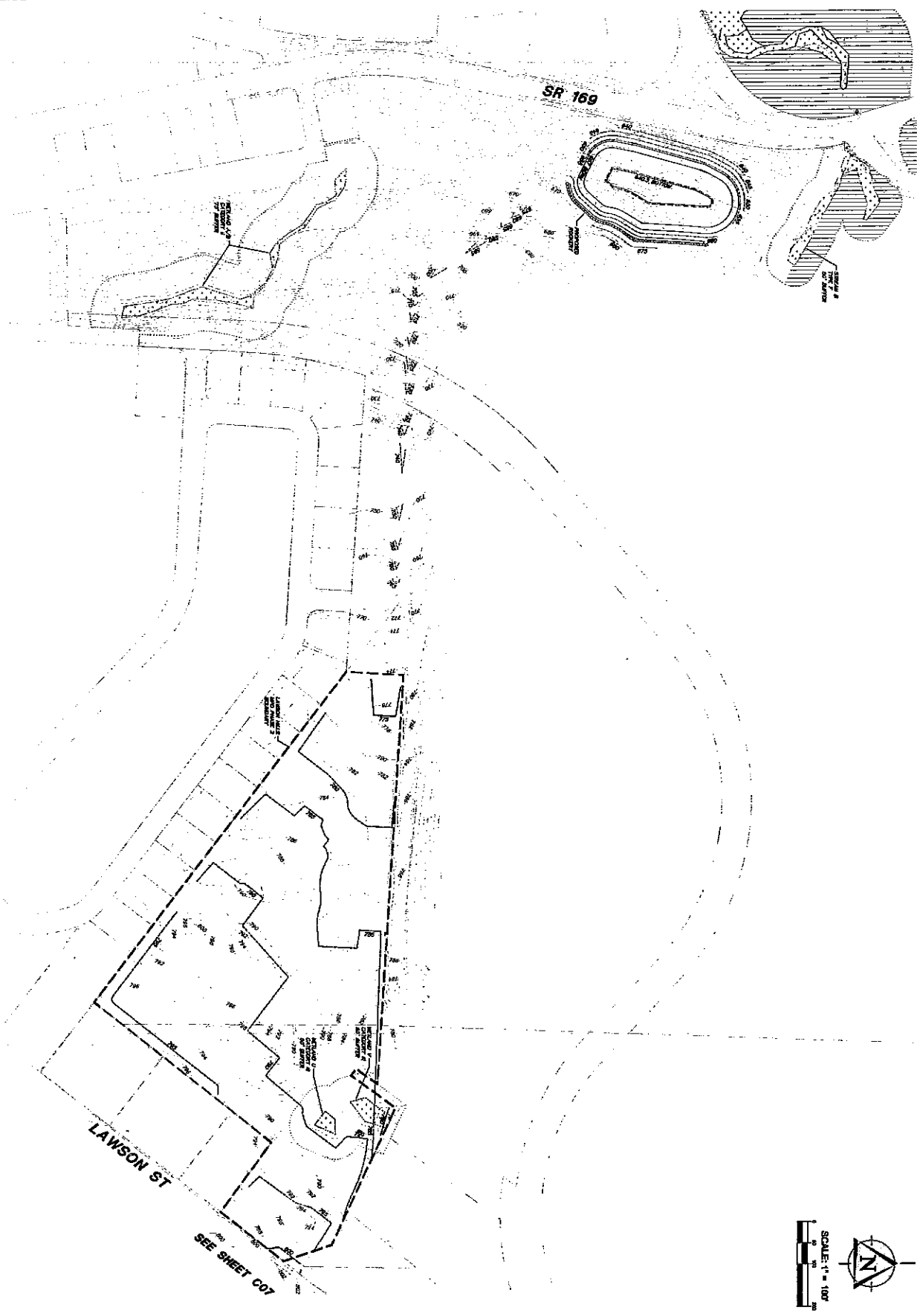
PRELIMINARY



PROJECT NO. **05-336**  
PROJECT NAME **C05#8**



SEE SHEET C04



DATE: 05-20-06

PROJECT NO. **05-336**  
 SHEET NO. **006.8**



**PRELIMINARY**

DATE: 05-20-06	BY: [Signature]
CHECKED BY: [Signature]	DATE: 05-20-06
DESIGNED BY: [Signature]	DATE: 05-20-06
PROJECT: LAWSON HILLS	
SHEET: 006.8	

**LAWSON HILLS**  
**PHASE 2 PRELIMINARY GRADING PLAN**

---

**THE VILLAGES/LAWSON HILLS MPDs**  
**PHASE 2 OVERALL GRADING PLAN**

CITY OF BLACK DIAMOND, WASHINGTON

TRAD ASSOCIATES  
 10000 1st Ave. N.E.  
 Bellevue, WA 98004  
 (206) 451-1111  
 www.triadassociates.com





WASHINGTON

**THE VILLAGES/LAWSON HILLS MPDs**  
 PHASE 2 OVERALL GRADING PLAN

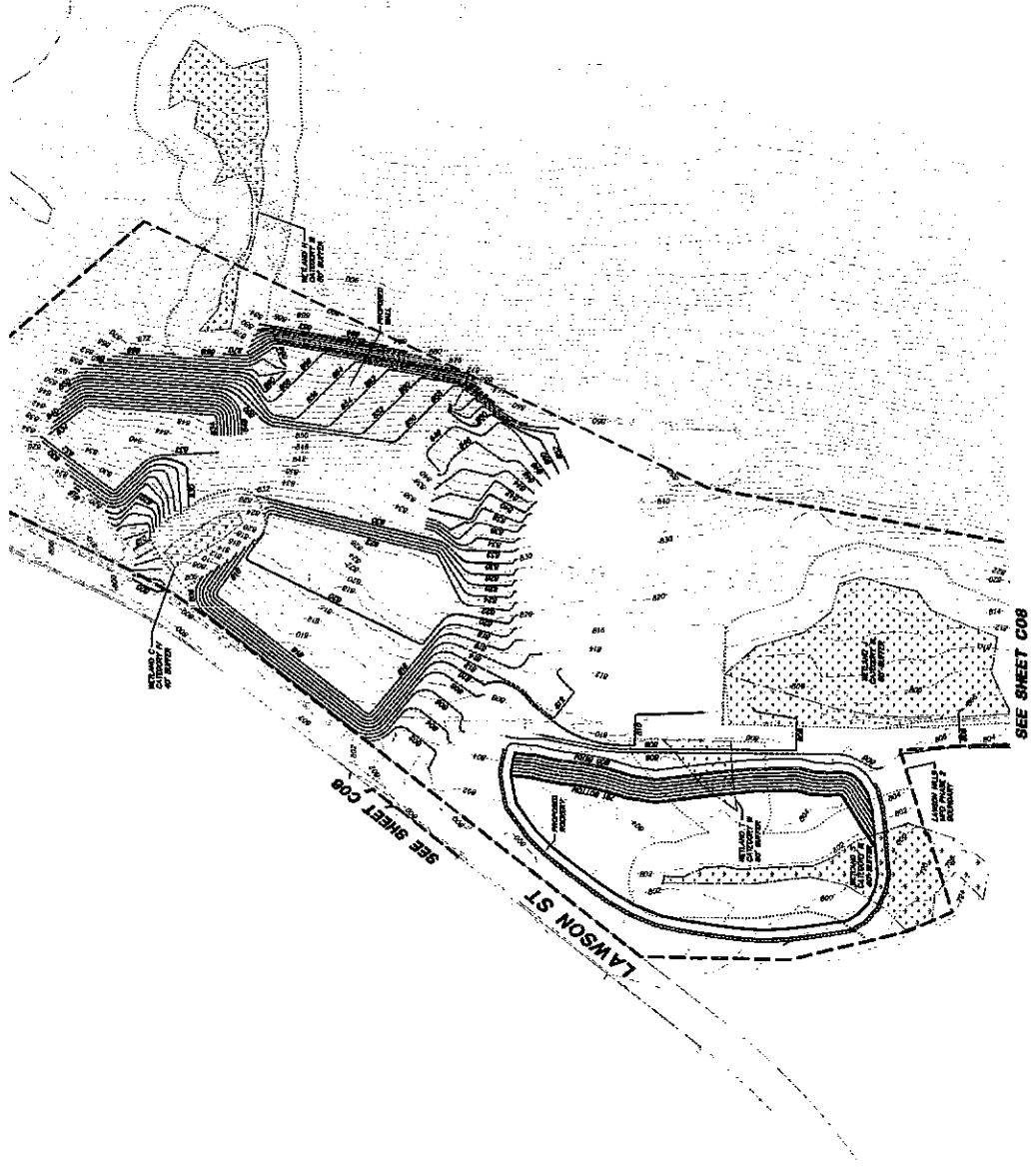
**LAWSON HILLS**  
 PHASE 2 PRELIMINARY GRADING PLAN

CITY OF BLACK DIAMOND

NO. 1	NO. 2	NO. 3	NO. 4	NO. 5	NO. 6	NO. 7	NO. 8	NO. 9	NO. 10



PROJECT NO. **05-336**  
 SHEET NO. **C07#8**



SEE SHEET C08

SEE SHEET C09

LAWSON ST

